

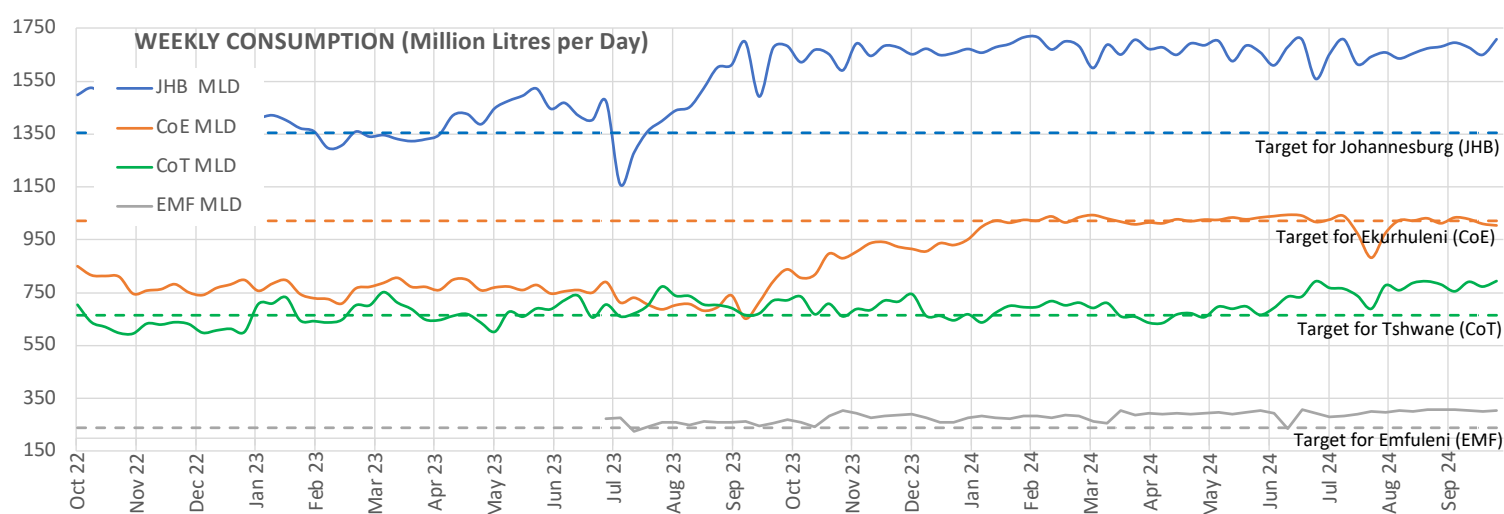
# WEEKLY UPDATE:

## GAUTENG WATER SECURITY DASHBOARD

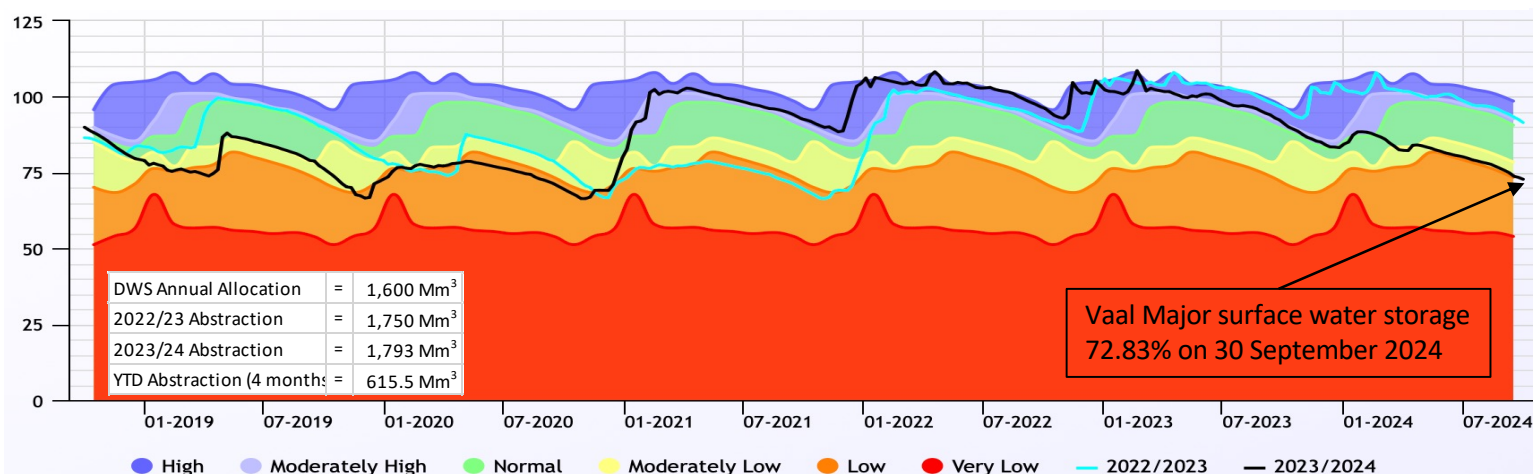
week to 4 October 2024

1. METRO WATER CONSUMPTION	TOTAL RW	Joburg	Ekurhuleni	Tshwane	Emfuleni
This Week Average Daily Use (MLD)	4,128	1,710	1,004	794	303
Last Week Average Daily Use (MLD)	4,033	1,651	1,010	773	300
Water Use Efficiency Target Use (MLD)	3,604	1,356	1,022	666	239
DIFFERENCE BETWEEN TARGET AND ACTUAL (MLD)	429	354	18	128	64
% Deviation from target use	12%	26%	-2%	19%	27%
Gross Per capita use (lcd)	285	271	248	242	420
Increase/Decrease from previous week	↑	↑	↓	↑	↑
Population	14,149,748	6,094,057	4,066,691	3,989,000	721,663

### 2. OVERALL WEEKLY CONSUMPTION / WATER USED FOR JOHANNESBURG, TSHWANE, EKURHULENI METROS & EMFULENI



### 3. IVRS SYSTEM STATUS – 5-year Vaal Major combined surface water storage



#### Notes:

- MLD = millions of litres per day, the common measurement of total water use for cities
- WUE = Water use efficiency targets is the target demand that matches the licence conditions of Rand Water.
- On request of dashboard feedback, Emfuleni has been included. The three metros use  $\pm 77\%$  of water produced by Rand Water and 84% of the WUE (Project 1600) target. With Emfuleni, this makes up 91% of Rand Water's WUE target.
- Rand Water metro data is published weekly on their website (updated 30 September 2024) for Joburg, Ekurhuleni & Tshwane. Source: <https://www.randwater.co.za/media/MeterReadings/WeeklyMeterReadings3Metros.pdf>
- The 5-year Vaal Major system storage is shown as indication that it is tracking lower than in the previous 3 years. Overall storage is tracking in the worst sequence projection. Rand Water has imposed Level 1 restrictions. DWS Restrictions are implemented on the IVRS when dam levels are below 60% at the beginning of the hydrological year starting in May of each year. Should over-abstraction continue, and rainfall be lower than normal, the DWS model is likely to indicate that restrictions be imposed in May 2025. Source: <https://www.dws.gov.za/niwis2/SurfaceWaterStorage>